



Light source: 3W high-intensity LED
(available in different colours)

Bright and intense light output with narrow beam

Beam angle: 7° to 10° depending on led colour

Can mount optionally frost or colour filters

Remote control via DMX 512

Built-in DMX recorder to allow independent operation
with pre-recorded effects

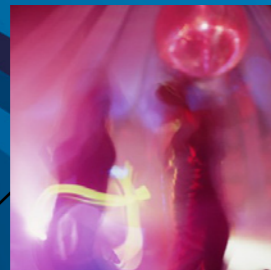
Dimmer control: does not flicker in front of TV cameras

s/3

Motorised LED projector for
architectural applications



STAGE



DISCO



TV STUDIO



LOUNGE

Very fast and accurate
pan/tilt movements

Strobo effect on a separate channel
from the dimmer

Compact body in laser-cut aluminium

Available in black, white and metal colours

Can be recess-mounted in counter-ceilings

Low consumption (approx. 20W)

Switching supply 100-240v with automatic setting of working tension





SL3

The new Spotlight SL3 is a compact motorised LED projector suitable for a wide range of architectural and entertainment applications.

The light source is a high intensity 3W LED generating a light beam particularly brilliant and concentrated. It is also possible to obtain some chromatic effects by mounting different coloured LED's, or colour gel filters.

The very rapid movement, the strobo effect and the low consumption (approx 20W per spot) make the SL3 a very interesting choice for animation effects in the dance areas of clubs and lounge bars; this projector is the perfect hi-tech alternative to the classic models of scanners and moving heads.

The DMX control allows to gradually adjust acceleration and deceleration of both tilt/pan and strobo.

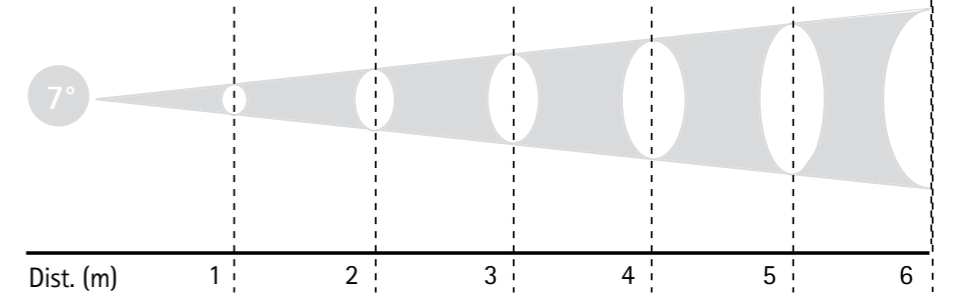
All adjustments and effects can subsequently be memorised in the projector so they can be played back independently, with no need to be connected to a light desk.

Last but not least, thanks to the dimmer specifically calibrated to prevent the troublesome flickering effect during camera shoots, the SL3 is particularly suited for installations in TV studios and music video sets.



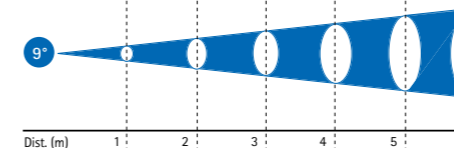
Photometric Data 3W White Led colour temperature 5500°K

| | | | | | | |
|-------|------|------|------|------|------|------|
| Lux | 9625 | 2406 | 1619 | 601 | 385 | 287 |
| Ø (m) | 0.12 | 0.24 | 0.37 | 0.49 | 0.61 | 0.73 |



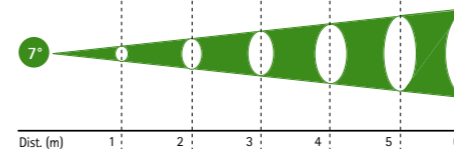
3W Blue Led

| | | | | | | |
|-------|------|------|------|------|------|------|
| Lux | 4375 | 1093 | 486 | 273 | 175 | 121 |
| Ø (m) | 0.16 | 0.31 | 0.47 | 0.63 | 0.79 | 0.94 |



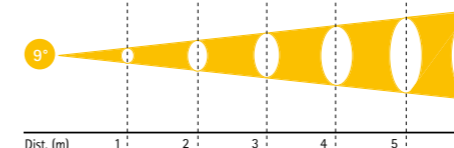
3W Green Led

| | | | | | | |
|-------|------|------|------|------|------|------|
| Lux | 8100 | 2025 | 900 | 506 | 324 | 225 |
| Ø (m) | 0.12 | 0.24 | 0.37 | 0.49 | 0.61 | 0.73 |



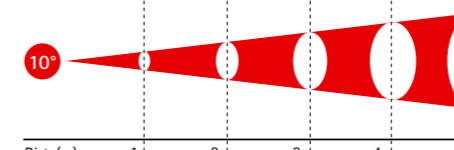
3W Amber Led

| | | | | | | |
|-------|------|------|------|------|------|------|
| Lux | 852 | 213 | 94 | 53 | 34 | 23 |
| Ø (m) | 0.16 | 0.31 | 0.47 | 0.63 | 0.79 | 0.94 |



3W Red Led

| | | | | | |
|-------|------|------|------|------|------|
| Lux | 225 | 56 | 25 | 14 | 9 |
| Ø (m) | 0.17 | 0.35 | 0.52 | 0.70 | 1.05 |



Main Features

Ultra-compact (palmtop) LED lighting fixtures

Single-colour LED with interchangeable colour optics

Beam angle: 7° to 10° depending on led colour

DMX-motorized or manually-positionable mono-yoke

Motorized yoke for Tilt +/- 105° and Pan 350°

Tilt, pan, speed, dimmer and strobo control with programmable functions

Storable chaser and memories for stand-alone use

Adjustable flicker-free dimmer from 0-100%

Strobo speed can be adjusted, synchronised or random

Power Supply: 0/260Vac 50/60Hz. - Max. 25W

Dimensions

